

Route 21

Updated: May 2016

Beaver via Milford to Nevada line. Beaver -Milford, August 22,1910; Milford -Newhouse, November 10, 1916; Newhouse -Nevada line, March 7,1927.

1953 Description:

From Beaver on Route 1 westerly via Milford and Garrison to Utah-Nevada State line.

Approved by 1963 Legislature:

Approved by 1963 Legislature:

1967 Legislature:

*(A)

1975 Legislature Description:

From the Utah-Nevada state line near Garrison southerly and easterly to Beaver on SR-160.

1983 Legislature: Description remains the same.

1985 Legislature: Description remains the same.

1986 Legislature: Description remains the same.

1987 Legislature: Description remains the same

1988 Legislature: Description remains the same.

1990 Legislature: Description remains the same.

1992 Legislature: Description remains the same.

1993 Legislature: Description remains the same.

1994 Legislature: Description remains the same.

1995 Legislature: Description remains the same.

1996 Legislature: Description remains the same.

1997 Legislature: Description remains the same.

1998 Legislature: Description remains the same.

1999 Legislative Description:

From the Utah-Nevada state line near Garrison southerly and easterly to Beaver to Route 160.

2000 Legislature: Description remains the same.

2001 Legislature: Description remains the same.

2002 Legislature: Description remains the same.

2003 Legislature: Description remains the same.

2004 Legislature: Description remains the same.

2005 Legislature: Description remains the same.

2006 Legislature: Description remains the same.

2007 Legislature: Description remains the same.

2008 Legislature: Description remains the same.

2011 Legislature: Description remains the same.

2016 Legislation: Description remains the same.

* Refers to resolution index page following.

Route 21

COUNTY/VOLUME & RESOLUTION NO.

A. Beaver Co 2/23

DESCRIPTION OF RESOLUTION CHANGE

(A). Relocation - Between Minersville and Minersville Reservoir.

Relinquishment of Realigned Highway
Authority: Sec. 27-12-29, UCA, 1953, As Amended

R E S O L U T I O N

State Route 21

1-21-3

WHEREAS, with the completion of project S-0352(5) has resulted in the construction on new alignment sections of new roadway between Minersville and Minersville Reservoir in Beaver County and,

WHEREAS, the remaining sections of the old alignment will no longer serve as a public road and,

WHEREAS, it has been recommended by Mr. C. V. Anderson, District Engineer, that the remaining sections of roadway that were left as a result of the realignment on project S-0352(5) should be abandoned from the State System of Highways.

NOW THEREFORE, pursuant to the Authority of Section 27-12-29, UCA, 1953, As Amended, it is hereby resolved as follows:

TOP-B

1. That the portions of highway constructed on new alignment as a result of project S-0352(5) be designated as a part of State Route 21 and all remaining portions of the old alignment of State Route 21 be abandoned and obliterated.

2. That by this action State Highway System mileage will decrease 0.1 + - mile.

3. That the map attached illustrating the action taken herewith is hereby incorporated as a part of this submission.

Dated this 29th day of March, 1968.

STATE ROAD COMMISSION OF UTAH

Walter S. Hamilton
Chairman

RESOLUTION
State Route 21
Page 2

Clem H. Church
Commissioner

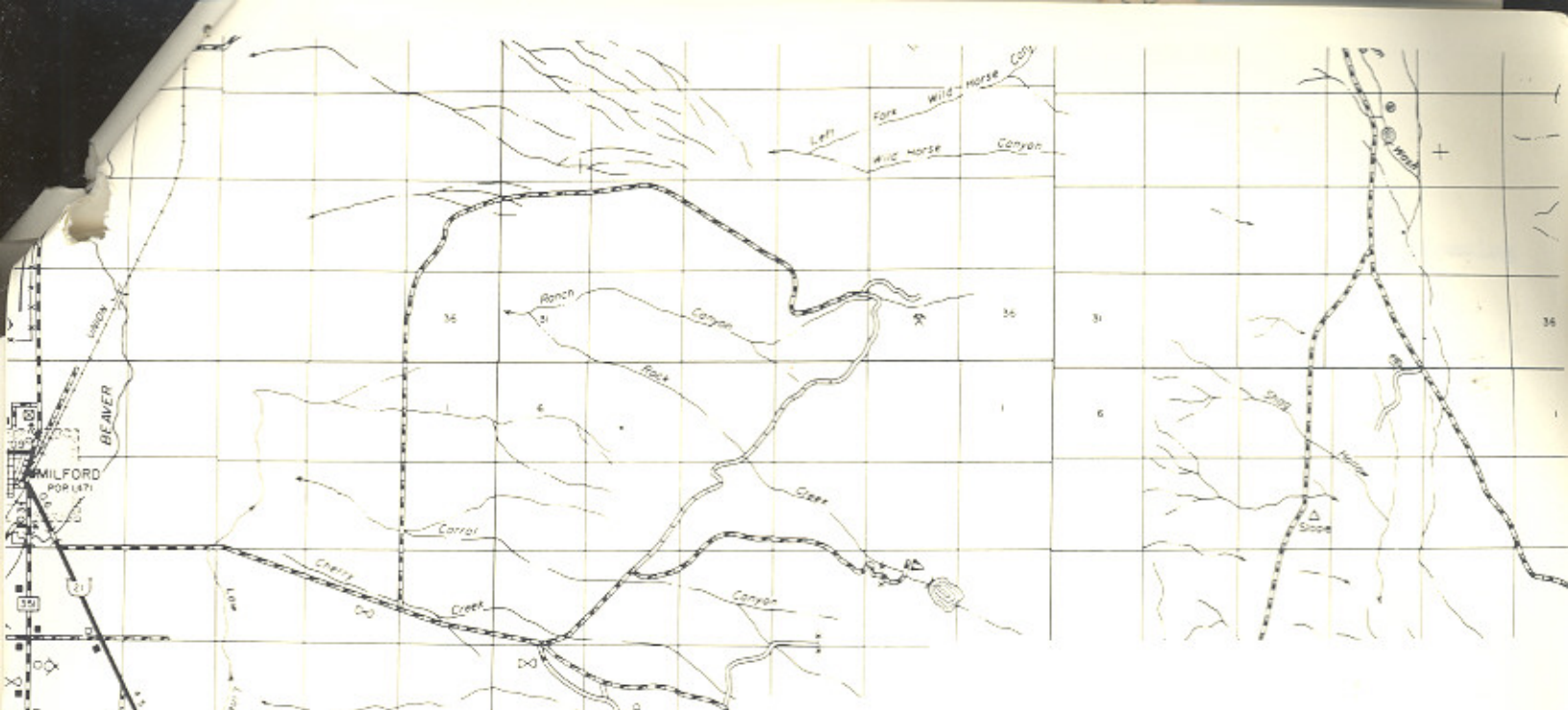
Ray H. Hart
Commissioner

Francis G. Smith
Commissioner

Commissioner

ATTEST:

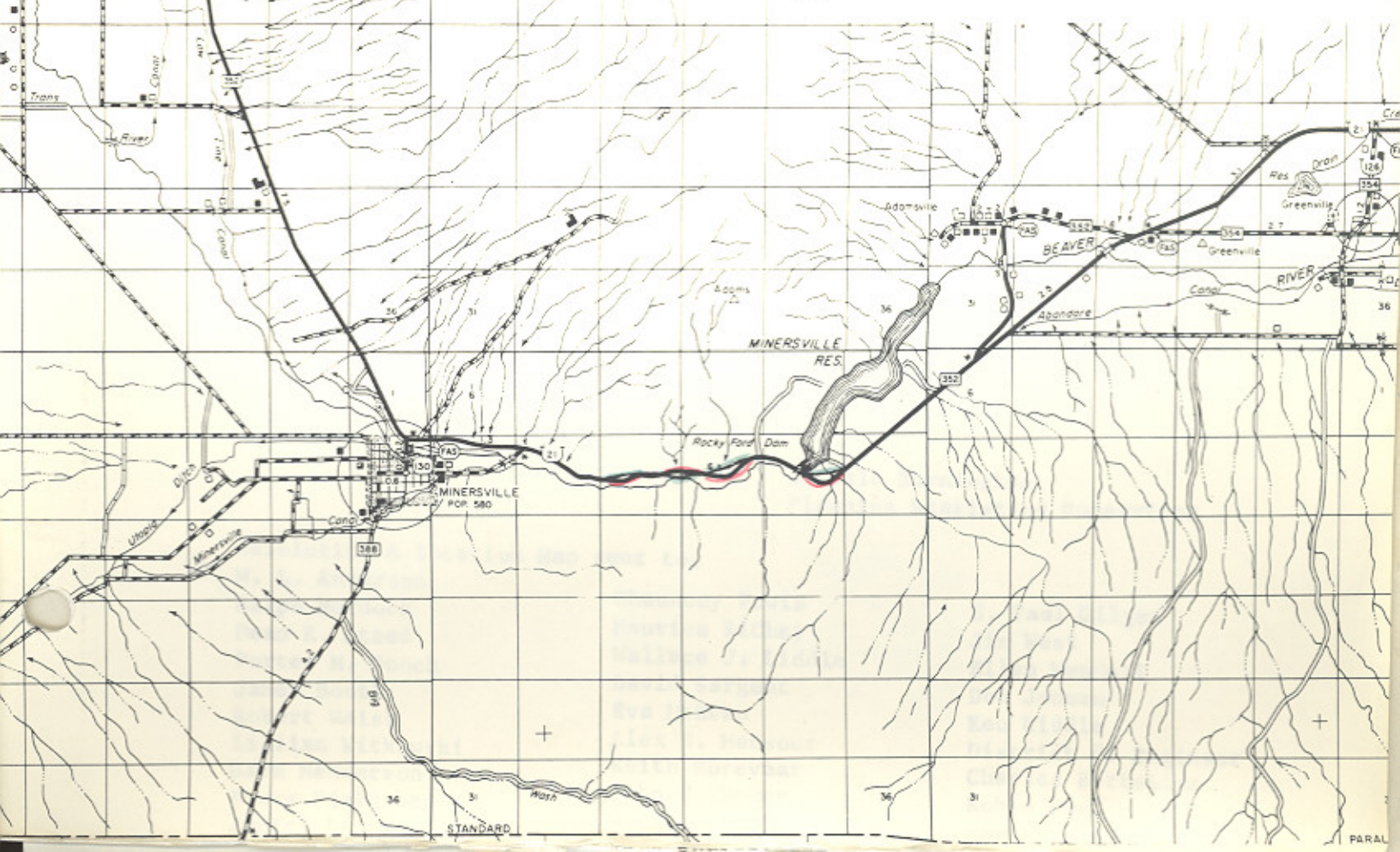
Donald C. Stanley
Secretary



UTAH STATE DEPARTMENT OF HIGHWAYS
Systems Planning Division

STATE ROAD CHANGES
BEAVER COUNTY

- Addition to State Road System
- Deletion from State Road System
- - - Transferred to Local Jurisdiction



UTAH STATE DEPARTMENT OF HIGHWAYS

cc: Howard B. Leatham
Engineer for Planning & Programming

Same Letter Sent To:
Daniel Watt, Bureau of Public Roads

See listing below:

April 2, 1968

Mr. H. L. Tolley, Chairman
Beaver County Commission
Beaver City, Utah 84713

Dear Mr. Tolley:

Subject: Transfer to a new alignment portions of State Route 21
between Minersville and Minersville Reservoir in
Beaver County

Effective March 29, 1968, the State Road Commission adopted a
resolution transferring portions of State Route 21 to the new alignment
constructed by Project S-0352(5) between Minersville and Minersville
Reservoir.

The portions of the old alignment no longer serving as a public
road are abandoned.

State Highway System mileage is decreased 0.17 - mile.

Attached is a copy of the resolution and a location map.

Very truly yours,

B. Dale Burningham
Planning Statistics Supervisor

Resolution & Location Map sent to:

W. L. Anderson
Ralph Murdock
Dean R. Steed
Porter M. Gooch
James Booth
Robert Walsh
Lillian Witkowski
Garn Henderson
Bruce Fjeldsted

Chauncey Powis
Maurice Richey
Wallace J. Liddle
David Sargent
Eva McEwan
Alex E. Mansour
Keith Rosevear
John W. Homer

E. Paul Gilgen
Jim West
Ellen Wandell
Don Jensen
Ken Riddle
District #5 Engineer
Charles Bertolina
Robin Hood

Memorandum

UTAH STATE DEPARTMENT OF HIGHWAYS

DATE: January 25, 1968

TO : B. Dale Burningham
 Planning Statistics Supervisor

FROM : C. V. Anderson **C.V.A.**
 District Five Engineer

SUBJECT: S-0352(5) Junction U-130 & U-21 Easterly
 Redesignation of AId Alignment

The portions of old alignment along this project have been scarified and it is my recommendation they be considered as abandoned.

CVA:vg



cc

res

obis

0.1 + - 2011

1.

hereby incorporated

Dated this _____

State
Moratorium
Revisions
7

RESOLUTION

Moratorium on State Highway System Revisions

WHEREAS, the Utah League of Cities and Towns and the Utah Association of Counties are proposing a comprehensive study analyzing highway responsibility, functional classification, funding sources and money distribution formulas, and

WHEREAS, the Utah Transportation Commission recommends support of the study to begin in 1986, and

WHEREAS, there is a definite need to establish criteria for the addition and deletion of roadways or proposed roadways to the State System of Highways

NOW, THEREFORE, be it resolved as follows:

That a moratorium on State Highway System additions be in effect until the completion of the proposed study.

That the only exceptions to this moratorium will be those roadway connections built to assure proper function of the Interstate System and existing routes built on new alignment.

Dated this 13th day of December, 1985.

UTAH TRANSPORTATION COMMISSION

Samuel J. Taylor
Chairman

Wayne S. Linton
Vice-Chairman

Clem H. Church
Commissioner

B. LaDawn Cox
Commissioner

Joe J. Weston
Commissioner

Attest:

Alma S. Anderson
Secretary